



General Ledger Included in the Core System

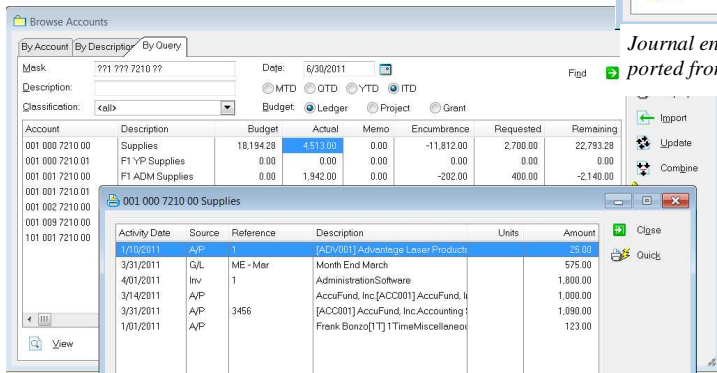


WHAT IT DOES FOR YOU

The core of the AccuFund Accounting Suite is the General Ledger. All transactions from all modules are immediately posted to the General Ledger and are available for reporting. Adjustments are made through Journal Entries. The General Ledger provides summary and detail reporting for all years and across years.

HOW IT WORKS

The AccuFund General Ledger provides a 255 character alpha-numeric account structure. Each segment or element may be of any length and the system will support up to 99 segments within the 255 characters. The database includes all fiscal years for continuous reporting as required. When entering data in any AccuFund module, the transactions are directly posted in the General Ledger on a real-time basis making all reporting current including all transactions entered today.

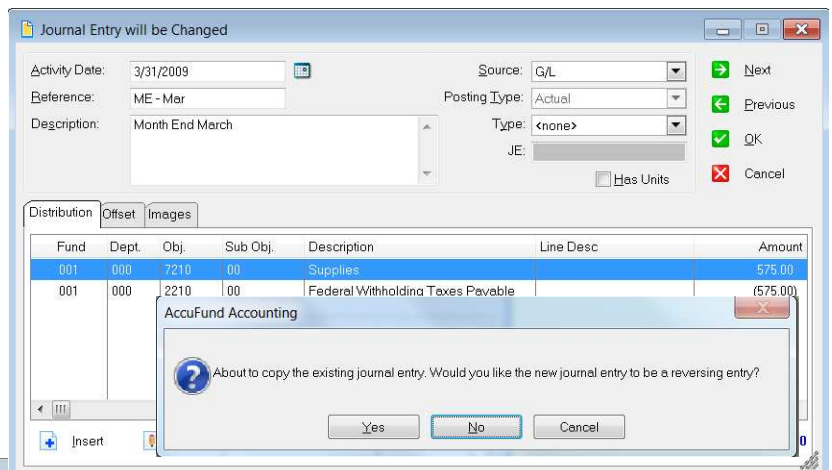


At any account review balances and double click balance to see detail for the period.

The General Ledger supports multiple transaction types including:

OTHER FEATURES

- ✓ For the chart of accounts, a predefined full account may be utilized or accounts may be built
 - ✓ Actual
 - ✓ Encumbrance
 - ✓ Budget
 - ✓ Grant Budget
 - ✓ Project Budget
 - ✓ Memo Entries
 - ✓ Requested
 - ✓ Allocation
 - ✓ Budget Revision
 - ✓ Grant Budget Rev.
 - ✓ Project Budget Rev.
 - ✓ Closing Entries



Journal entries can be easily reversed in the same or different period and can be easily imported from external files including Excel® spreadsheets.

based on tables of valid elements, know in the system as “Dynamic Elements”.

- ✓ The **General Ledger** supports multiple year end closings and allows entry in the following year prior to closing for as long as necessary to complete the closing process.
- ✓ Multiple budget types including financial, grant and project provide multiple users the ability to report directly from the system.
- ✓ Export transaction detail to Excel with formatting and formulas in the totals.

- ✓ Extensive import capabilities provide easy integration of external systems such as specialized billing, licensing and development systems.
- ✓ Accounts balances and activity may be viewed on-screen through “Drill-down” capabilities allowing a user to click on an account balance view and report the transaction detail underlying the balance.

COMPONENT AVAILABILITY

The General Ledger provides the core of two AccuFund products:

- ✓ **AccuFund Accounting Suite**
- ✓ **FASB/GASB Reporter**

STANDARD TEMPLATES PROVIDED

Primary reporting for the **General Ledger** is through the Financial Report Writer. Detail reports are available in the module including:

- ✓ General Ledger - detail including monthly, year-to-date, and inception-to-date options
- ✓ Journal Detail - provides the detail of postings by module, activity date and system posting date.
- ✓ Account Detail - shows detail of account activity to any period of time within and across fiscal years.
- ✓ Custom transaction detail through the Report/Forms Designer

Ledger and Journal reports can be run for a month, quarter, fiscal year or inception to date for any type of activity, and an account “mask” can be applied to limit accounts.

COMPONENT INTEGRATION

All AccuFund modules post directly to the **General Ledger**.

AccuFund Sample								
Year To Date General Ledger for Period Ending 6/30/2002								
Account	Date	Source	J/E	Reference	Description	Debit	Credit	Balance
001 000 7210 00					Supplies Beginning Balance			4,613.00
	11/01/2001	A/P		4567	Colorado Custom Decks	500.00		5,113.00
	11/15/2001	A/P		0000118	New back deck AccuFund, Inc. Software	100.00		5,213.00
001 000 7210 00					Supplies Ending Balance	600.00	0.00	5,213.00
001 000 7210 01					Office Supplies Beginning Balance			12.10
	11/15/2001	A/P		0000118	AccuFund, Inc. Software	100.00		112.10
	12/13/2001	G/L		01-01-01	Record month-end accrual	1,500.00		1,612.10
	12/18/2001	Inv			A100 Accounting Software	50.00		1,662.10
001 000 7210 01					Office Supplies Ending Balance	1,650.00	0.00	1,662.10
001 000 7210 02					Computer Supplies Beginning Balance			4,995.00
	11/07/2001	A/P		0000113	Munson, John T Refund for something	100.00		5,095.00
	11/20/2001	A/P		12356	Colorado Custom Decks	500.00		5,595.00
001 000 7210 02					Computer Supplies Ending Balance	600.00	0.00	5,595.00
001 000 7210 03					Operating Supplies Beginning Balance			230.15
001 000 7210 03					Operating Supplies Ending Balance	0.00	0.00	230.15
002 000 7210 00					Supplies Beginning Balance			25.00
	11/01/2001	A/P		4567	Colorado Custom Decks New back deck	500.00		525.00
002 000 7210 00					Supplies Ending Balance	500.00	0.00	525.00
002 000 7210 01					Office Supplies Beginning Balance			12.10
002 000 7210 01					Office Supplies Ending Balance	0.00	0.00	12.10

The Ledger Report provides the detail of transactions including check disbursement information for paid invoices.